

Table of Contents

Installing your Business Internet Service.....	2
Setting up your Hardware.....	3
Technical Support.....	6
Email and Online Tools.....	7
Security and the Internet.....	17
Tips & Troubleshooting.....	20
Using Dial-up Access.....	23



Installing your Business Internet Service

Before you Begin

1. Please disable any anti-virus or firewall software and close any open applications before continuing with the installation. Most anti-virus and firewall programs will have a small icon in your system tray on the bottom right-hand corner of your desktop (computer screen). If you are unsure what your application icon looks like, try holding the mouse pointer over the different icons, and the name of the application should appear (Figure 1). Once you have identified which icon is for your anti-virus and/or firewall program, right-click it and select the option that disables the program.



Figure 1: System Tray

2. Ensure that you have the following information ready in order to install the software:
 - Business User ID
 - Access PasswordYou will find this information in your welcome letter.
3. Place the activation CD in your computer's CD-ROM drive and follow the instructions on the screen. The on-screen instructions will guide you through all of the software and hardware installation steps.

DO NOT PLUG IN ANY CABLES UNTIL INSTRUCTED TO DO SO BY THE ACTIVATION SOFTWARE.

Note: If your computer does not have Autorun enabled, or if you have a Macintosh, you may have to launch the CD manually (using Explorer on a Windows computer, or with the Finder on a Macintosh). Double-click the CD icon, then double-click the **Business Internet** icon.

Setting up your Hardware

IMPORTANT: Before beginning, insert the activation CD included in your kit into your computer and follow the installation instructions.

Note: Your modem may not look exactly as pictured.

1. Connect the phone filters

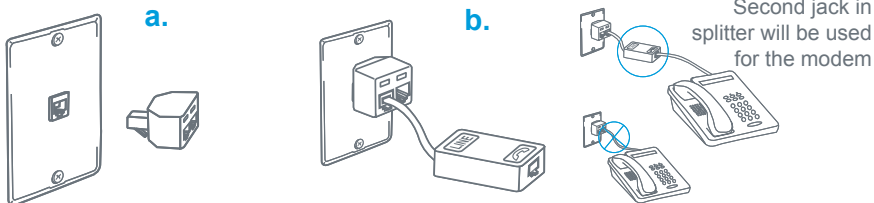
Repeat this process for **every phone** on the same line as your Business Internet service.

- Unplug the telephone cable from the wall jack, and plug a filter into the wall jack.
- Plug the telephone cable you unplugged from the wall jack into the filter.

2. Using a filtered phone and a modem in the same jack

If the wall jack is to be shared by the DSL high speed modem and a phone:

- Plug the splitter into the wall jack.
- Plug the filter (from the phone) into the splitter.
- In the next step (Step 3 on the next page), you will plug the cable from the modem into the splitter.



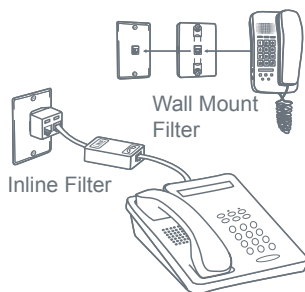
All phones, faxes, satellite receivers and alarms connected to your phone line MUST be filtered.

If you have a wall-mounted phone

The wall-mount filter is not included in the kit. If you have a wall-mounted phone, please visit this site to order a wall-mount filter: bell.ca/businessfilters

You will need your User ID and Password.
Or call **1-877-877-2426** to order.

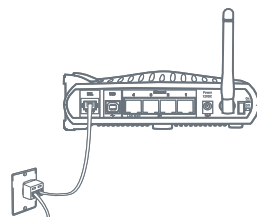
In order to connect to the Internet, disconnect your wall-mounted phone until you receive the wall-mount filter.



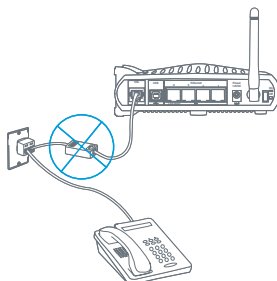
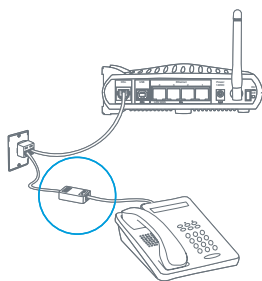
3. Connecting your modem and phone to the phone line

IMPORTANT: Before continuing, please make sure that you have inserted the activation CD into your computer and followed the installation instructions.

- Connect one end of the phone cable to your telephone wall jack (or the splitter you set up in step 2).
- Connect the other end of the phone cable to the port on the back of your DSL modem labeled **DSL**.



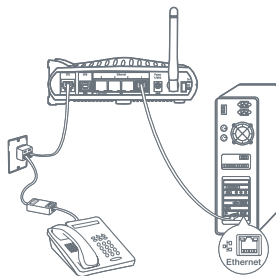
Note: Do not attach a filter to the modem. Filters must only be attached to a phone or fax.



4. Connecting the modem to the computer

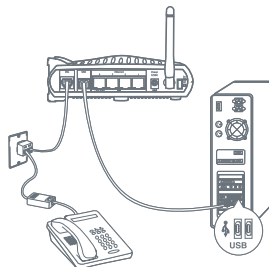
If you are using the Ethernet cable

- Connect one end of the Ethernet cable to the Ethernet port on your computer.
- Connect the other end of the Ethernet cable to the port on the back of the DSL modem labeled **1** or **Ethernet**.



If you are using the USB cable

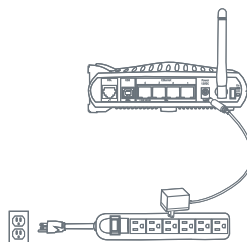
- Connect the USB cable to the USB port on your computer.
- Connect the other end of the USB cable to the port on the back of the DSL modem labeled **USB**.



Note: You must only connect the USB cable when asked to do so by the software.

5. Power Cord Connection

- Connect your DSL modem's power supply to the DSL modem, and then plug the other end into a surge-protected power bar (not provided).
- Make sure that the modem and computer are powered on.



6. Verify the modem lights

Once you have completed the installation steps and turned on the modem, verify the lights on your modem. The following lights should be lit depending on which setup (Ethernet or USB) you have completed:

Ethernet: **Power**, **Ethernet** and **DSL** lights all need to be lit.

USB: **Power**, **USB** and **DSL** lights all need to be lit.

Surge Protector

You must ensure that the Bell modem is connected to a surge protector, such as a power bar. In fact, the power cord for the modem is the **ONLY** connection that should be connected to a surge protector. **DO NOT** run your telephone cable through a surge protector as this will cause interruptions with your Business Internet service. The telephone cable should always be connected **DIRECTLY** from the wall jack to the modem.

Technical Support

Contact us

24/7 Technical Support

Your Business Internet service includes access to FREE technical support, 24 hours a day, 7 days a week. Most issues can be easily solved by visiting our Customer Service site at **bell.ca/businessaccounts**. Here, you will find answers to a variety of account and technical concerns. Help is just a click away. At Bell, customers like you come first. We are here to help and offer you a variety of ways to get in touch.

Technical support is available over the phone 24 hours a day, 7 days a week or by email at **assistance@bellnet.ca**.

Across Canada, call **1-877-877-2426**.

If you receive an error message on your screen, please write it down before contacting our support service agents. This information will help the technical support agents give you the assistance you need as quickly as possible.

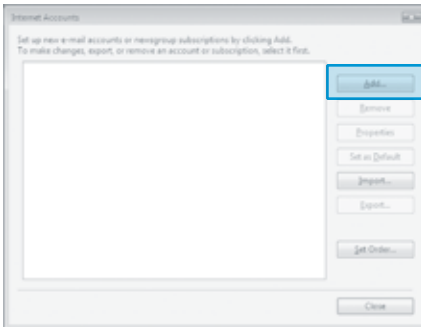
Email and Online Tools

Bell Business Internet Mail

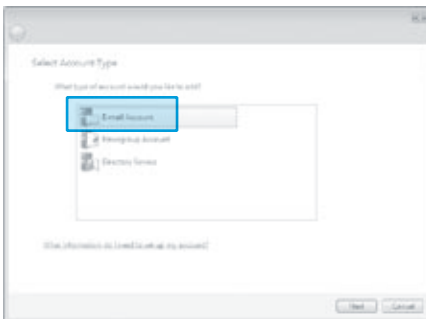
Setting up a new email account in Outlook Express

1. Double-click the **Internet Explorer** icon.
2. Click the **Mail** button in the toolbar, then click **Read Mail**.
3. In Outlook Express, click **Tools**, then click **Accounts**.
4. You will need the following information to configure your Business Internet High Speed settings.
 - Your desired email display name
 - Your email address
 - Incoming mail POP3 Server: **pop51.bellnet.ca**
 - Outgoing mail SMTP Server: **smtp10.bellnet.ca**
 - Your user/account name
 - Your password
5. Once this is completed, close the Accounts window.
6. You can also access the same email account online at **[www.bell.ca/bizemail!](http://www.bell.ca/bizemail)**

4. Click **Add**.



5. Click **E-mail Account**.



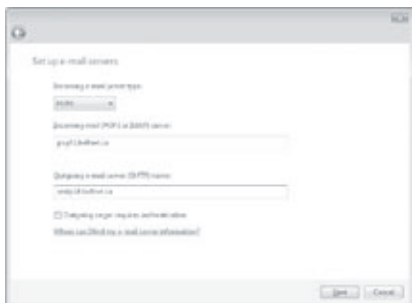
6. Click **Next**.
7. Type your name in the box.



8. Click **Next**.
9. Type your email address in the box.



10. Click **Next**.
11. Click **POP3** in the drop-down menu under **Incoming email server type**.
12. Type the following information:
 - Incoming mail server: **pop51.bellnet.ca**
 - Outgoing e-mail name server: **smtp10.bellnet.ca**
13. Do NOT put a check mark next to **Outgoing server requires authentication**.



14. Click **Next**.
15. Type your Business Internet UserID (**xxxxx@bellnet.ca**) in the **E-mail username** box.
16. Type your password in the **Password** box.
17. Leave the **Remember password** option checked. It will allow you to send and receive email without repeatedly entering your password. However, to prevent others from checking your email, you could uncheck this option and log in every time you retrieve your messages.

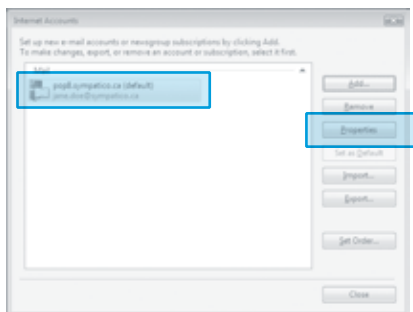


18. Click **Next**.
19. Click **Do not download my e-mail at this time**.



20. Click **Finish**.

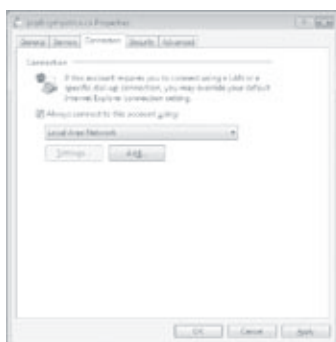
21. In the Internet Accounts window, click your mail account, then click **Properties**.



22. Proceed to *Configuring additional settings* below.

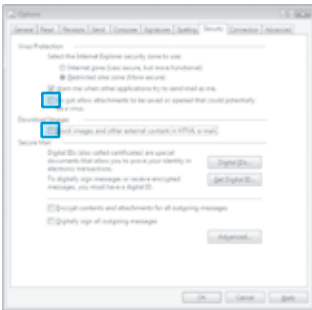
Configuring additional settings

1. Click the **Connection** tab.
2. Click **Always connect to this account using**.
3. Make sure that **Local Area Network** is selected in the drop-down menu.



4. Click **OK**.
5. Click the **Tools** menu.
6. Click **Options**.
7. Click the **Security** tab.

- Click to uncheck **Do not allow attachments to be saved or opened that could potentially be a virus.**
- Click to uncheck **Block images and other external content in HTML e-mail.**



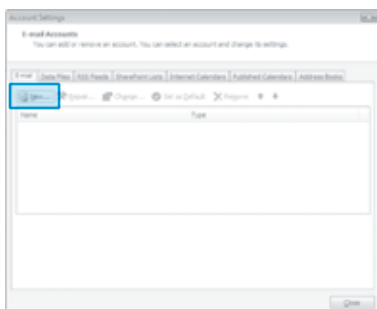
- Click **OK**.

Configuring Outlook 2007 for Business Internet

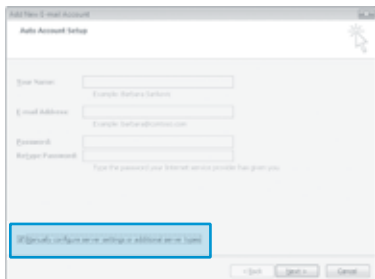
These instructions describe how to create a new email account in Windows Vista – Outlook 2007.

You'll need the following information on hand before you start:

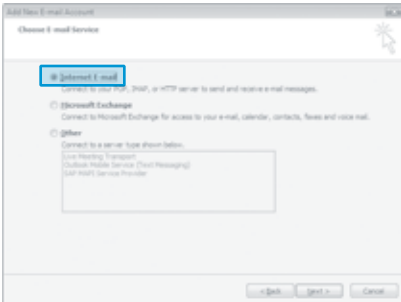
- Your user ID (which should look like **xxxxx@bellnet.ca**)
 - Your Business Internet email address
 - Your access password
 - Your outgoing (SMTP) mail server name
 - Your incoming (POP) mail server name
1. Open **Outlook 2007**.
 2. Click **Tools** and then click **Account Settings**.
 3. Click **New**.



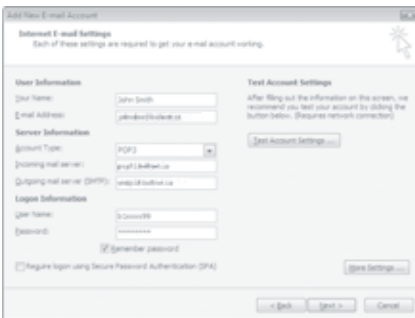
4. Check the box beside **Manually configure server settings or additional server types**.



5. Click **Next**.
6. Leave the option on **Internet E-mail**.

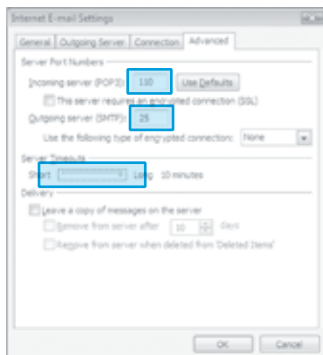


7. Click **Next**.
8. Type the following account information:
 - Your Name
 - Your Business Internet email address
 - Account Type: **POP3**
 - Incoming mail server (POP3): **pop51.bellnet.ca**
 - Outgoing mail server (SMTP): **smtp10.bellnet.ca**
 - User Name: Your user ID (**xxxxx@bellnet.ca**)
 - Password: Your access password



10. Click the **More Settings** button.

11. Click the **Advanced** tab.
12. Ensure **Incoming server (POP3)** is set to **110**.
13. Ensure **Outgoing server (SMTP)** is set to **25**.
14. Increase the **Server Timeouts** to **Long** (10 minutes).



15. Click **OK**.
16. Click **Next**.
17. Click **Finish**.

Security and the Internet

Surfing the Internet can be entertaining and informative, but you need to be aware of security issues when you are online. The Internet is filled with hackers, viruses, spyware and other threats designed to damage your computer and steal your personal information. At Bell, we recognize the importance of online safety and recommend the following security tools to help protect you and your family.

Anti-Virus

Anti-virus programs search for and delete viruses as they appear on your computer.

A virus is a malicious software program designed to reproduce itself and cause great harm to files or other programs. Viruses can automatically spread through networks or via email by disguising themselves as legitimate programs from legitimate sources. According to a 2005 study by European security leader Sophos, an unprotected Windows computer has a 50% chance of becoming infected within 12 minutes of going online.

There are many types of anti-virus service scanning options, such as:

- Scan on demand (manual scan).
- Scan in real time (always scanning in the background).
- Integrated into Windows Explorer so you can perform quick scans on files and directories.
- Scheduled scan (using Scheduled Scan feature).

Anti-Spyware

Spyware refers to hidden programs that monitor your computer activity and retrieve information such as credit card numbers, passwords and your favourite Web sites. Spyware can be installed on your computer without your knowledge or consent when you visit Web sites, download music, share files or even open email attachments. Information gathered is sent back to the people who created the program and can be used in a variety of ways. One of the most dangerous uses for spyware is identity theft, where someone else steals your identity and then proceeds to make purchases or performs illegal activities under your identity. Anti-spyware software scans your computer and removes any harmful

spyware programs. There are many “free spyware removers” available online, but the majority of them can be unreliable or illegitimate and may install their own spyware on your computer. Also, there may be a charge for technical support should you have any problems with the service. To keep yourself protected, make sure to get a good anti-spyware program from a company you can trust.

Fraud Protection

This tool provides protection from online fraud by blocking access to phishing Web sites. Phishing Web sites attempt to acquire sensitive information such as personal passwords and credit card information by posing as a legitimate business such as a bank or a credit card company. Once your personal information is acquired through a phishing Web site or email, it can be sold online to the highest bidder. Fraud Protection proactively protects you from accessing fraudulent Web sites by submitting the URL for verification against a Fraud Protection database. A warning message will appear if the site you are attempting to access is identified as fraudulent. If you are suspicious about a specific Web site, you can report it using the Fraud Reporting email address on the Fraud Protection home page. The Web site will be investigated to verify its legitimacy. Fraud Protection also protects you from attacks made through links in applications, such as email and Instant Messaging.

Firewall

Did you know that modern computers have over 65,000 communication ports used for sending and receiving information through the Internet? These ports can be used by hackers to break into your computer and take control of it without your knowledge. A firewall is a hardware or software solution that enforces security policies, preventing unauthorized users and programs from gaining access to your computer.

Activate Your Business Internet Security Services



Please visit www.bell.ca/internetsecurity to order!

Tips & Troubleshooting

FAQs

Do I really need telephone filters?

Yes. Filters are necessary to block interference that the modem can cause. If you did not receive enough filters with your installation kit, you can order more from www.bell.ca/businessfilters.

Why am I being prompted to specify the correct network interface card (NIC)?

Depending on your computer's hardware configuration, you may be prompted to specify the correct network interface card (NIC) for the Business Internet service. This might happen if you have previously installed USB modem drivers on your computer or if you have more than one Ethernet card installed in your computer. Please select the network card that you have connected to the Bell DSL modem with the Ethernet cable.

What should I do if I don't have enough free hard disk space to install the Business Internet software?

Delete any files you do not need (but avoid deleting files if you don't know what they are for) and back up any files you can to a CD-ROM or external hard disk. Empty the Recycle Bin or Trash. Relaunch the activation CD and try again.

With Macintosh, why do I get an "Error Setting Up Your Modem" message?

If you have Mac OS X 10.1 and two Ethernet adapters, you may see this message if you choose the wrong adapter.

1. Click the **Apple** menu, then click **System Preferences**.
2. Click **Network**.
3. In the **Location** menu, click **Edit Locations** or **Edit Location**.
4. Click the **Business Internet** location, then click **Delete**.
5. Click **Done**, then close the System Preferences window.
6. Restart the Business Internet installation program.

I am experiencing speeds that are slower than normal. What can I do?

Try to recycle or reboot your modem. This means turning the power off for three minutes and then turning the power back on. You should always try this as a first step before calling for technical support. To ensure your modem works at its optimum level, you should perform this reboot exercise once every two weeks.

Should I use the Ethernet Cable or the USB cable?

The Ethernet connection is recommended. To connect your modem using this connection type, you will use the Ethernet cable included in this kit. However, if you are connecting the modem to a laptop, you may need to select the USB connection type, especially if you do not have an Ethernet card installed in your computer.

Note: The USB option is only available to Windows users. USB drivers for the Efficient Networks SpeedStream series modems are currently not supported for Macintosh.

How do I switch from the USB cable to the Ethernet Cable?

If you are using the modem with a USB cable and you wish to use the Ethernet cable instead, please follow these instructions:

1. Shut down your computer, then unplug the USB cable from the computer.
2. Turn on your computer, then run the activation CD.
3. When you are asked to choose your modem connection type, choose the Ethernet-based connection.
4. Your new modem connection is configured. You may be asked to specify the correct network interface card to be used with your Bell modem. Make sure that you select the correct network interface card.

How long should my modem cables be?

Keep the modem cables short for best performance.

The telephone cable (RJ11) attached to the wall jack and to the back of your modem should be six feet or less in length. Anything longer than six feet can result in a degradation of your Internet speeds. You may use a longer Ethernet cable (RJ45) than the one provided, as the length of the Ethernet cable will not slow down the speed of your Internet service.

Troubleshooting your hardware setup

If you are having issues with your service, follow these steps:

1. Check the **DSL** light on your modem. If it's turned off or not solid green, check that all phones are filtered properly (see step 1 on page 4).

If all phones are properly filtered, then:

1. Unplug all devices (phones, fax, receiver, or anything using your phone service) from the phone jacks.
2. Plug your modem into a different phone jack using our 6-foot phone cable with NO telephone filter (see step 3 on page 5).
3. Turn on your modem and wait two minutes for the modem to power up completely.
4. If the DSL light turns solid green in the different phone jack, then try the modem back in the original jack, again with NO telephone filters. If you still have issues, please contact our Helpdesk at **1-877-877-2426**.
5. If the DSL light flashes green or does not turn on at all, please contact our Helpdesk at **1-877-877-2426**.

Other Issues: Try rebooting the modem by turning it off for two minutes, and then turning it back on and waiting for two minutes for it to power up completely. If you still cannot connect, please contact our Helpdesk at **1-877-877-2426**.

Using Dial-up Access

As a Business DSL Internet customer, you have the ability to use your service when travelling away from home. This feature is called Roaming*.

Roaming enables you to connect to the Internet from almost anywhere within Canada by using your Business Internet account information and a local phone number to access the Internet.

As part of your Business Internet High Speed service you receive 20 hours of Business Internet Dial service FREE each month! When you want to access the Business Internet service while away from the office, you can use a dialup connection. Follow the directions below to configure a dialup connection.

You will need the following items.

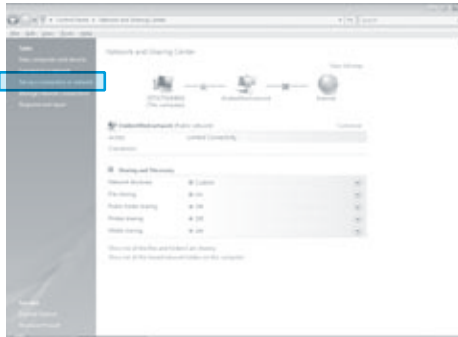
- A regular dial-up modem to connect your computer to a telephone line.
- Your Business Internet User ID and Access Password.

Ensure that your regular dial-up modem is installed. If necessary, consult the documentation that came with your modem.

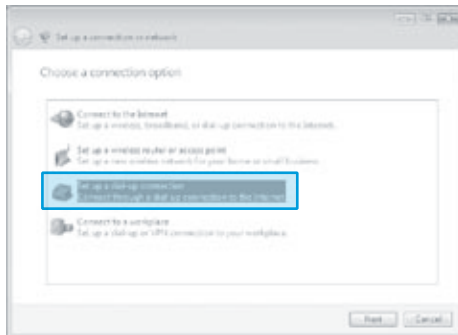
Configuring a dial-up connection with Windows Vista

1. Click **Start**, then click **Control Panel** (or click **Start, Settings**, and then **Control Panel**).
2. Click **Classic View** at the top left corner if you're not in Classic View.
3. Click **Network and Sharing Center**.

4. Click **Set up a connection or network**.



5. Click **Set up a dial-up connection**.



6. Click **Next**.

7. Type the appropriate information in the following fields:
 - Dial-up phone number
 - Bell Business user ID
 - Access password
 - Connection name

Set up a dial-up connection

Type the information from your Internet service provider (ISP)

Dial-up phone number: [Dialing Rules](#)

User name:

Password:
 Show characters
 Remember this password

Connection name:

Allow other people to use this connection
This option allows anyone with access to this computer to use this connection.

[Libero! have an IP](#)

Note: To help you with typing your password, you can click **Show characters**. This will display the password as you type it.

8. Click **Create**.

If there is no **Location** created, the following screen appears.

Location information

Before you can make any phone or modem connections, Windows needs the following information about your current location.

What country/region are you in now?

What area code (or city code) are you in now?

If you need to specify a carrier code, what is it?

If you dial a number to access an outside line, what is it?

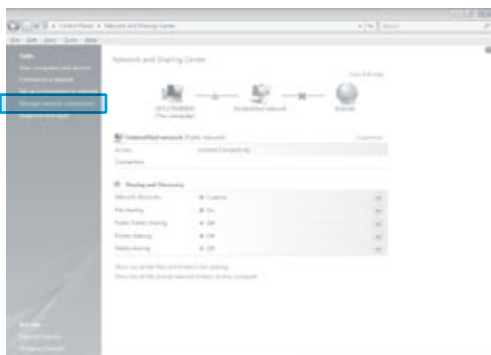
The phone system at this location uses:
 Tone dialing Pulse dialing

9. Fill in the boxes on this screen, and then click **OK**.

10. Click **OK** to close the Phone and Modem Options window.
11. Click **Close**. Your connection is now ready to use.

Connecting to the Internet

1. Click **Start**, then click **Control Panel** (or click **Start, Settings**, and then **Control Panel**).
2. Click **Classic View** at the top left corner if you're not in Classic View.
3. Click **Network and Sharing Center**.
4. Select **Manage network connections**.



Note: The connection with  is the default connection.

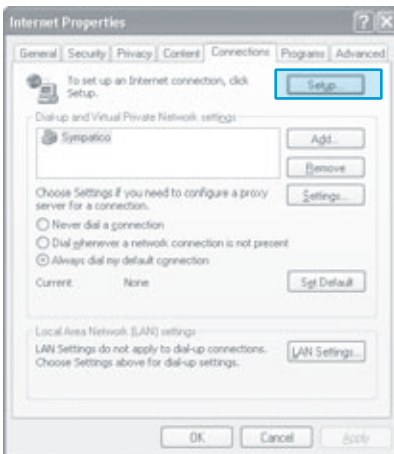
5. Double-click the connection icon.



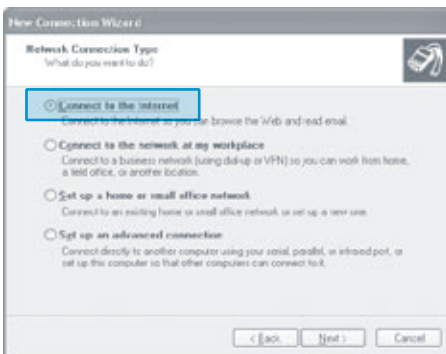
6. Click **Connect**.

Configuring your dial-up connection with Windows XP

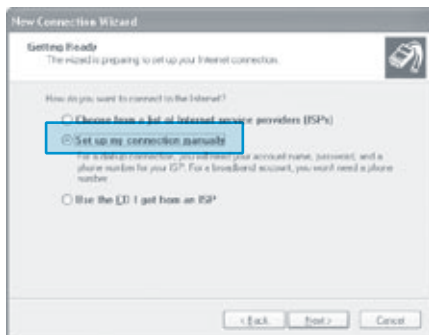
1. Click the **Start** button, and then click **Control Panel**.
2. In the Control Panel window, click **Network and Internet Connections**.
3. Click **Set up or change your Internet connection**.
4. In the Internet Properties window that appears, click the **Connections** tab, and then click the **Setup** button.



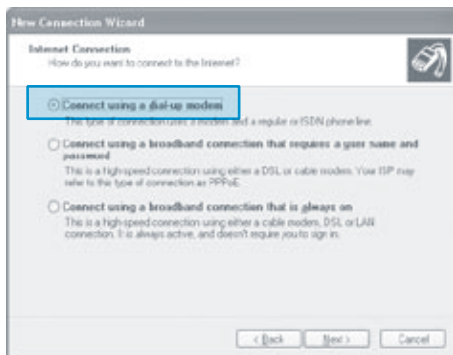
5. In the New Connection Wizard window that appears, click **Next**.
6. On the next screen, click the **Connect to the Internet** option, and then click **Next**.



7. On the next screen, click the **Set up my connection manually** option, and then click **Next**.



8. On the next screen, click the **Connect using a dial-up modem** option, and then click **Next**.



9. On the next screen, you will be asked for a name for the connection. Type **Bell Business**, and then click **Next**.



- Next, you will be asked for your local Bell Business dial-up access number. Make sure to include the area code. Type it in the **Phone number** field, and then click **Next**.



The screenshot shows a window titled "New Connection Wizard" with a sub-header "Phone Number to Dial" and the question "What is your ISP's phone number?". Below this, it says "Type the phone number below" and provides a text input field containing "(11) 252 3636". A note below the field reads: "You might need to include a '1' or the area code, or both. If you are not sure you need the extra numbers, dial the phone number on your telephone. If you hear a modem sound, the number dialed is correct." At the bottom are "Back", "Next >", and "Cancel" buttons.

- Next, in the **User name** field type your Bell Business User ID, and in the **Password** and **Confirm password** fields type your Bell Business password.



The screenshot shows a window titled "New Connection Wizard" with a sub-header "Internet Account Information" and the instruction "You will need an account name and password to sign in to your Internet account." Below this, it says "Type an ISP account name and password, then write down this information and store it in a safe place. (If you have forgotten an existing account name or password, contact your ISP.)". There are three text input fields: "User name" containing "t3vax03", "Password" containing "*****", and "Confirm password" containing "*****". Below the fields are two checkboxes: "Use this account name and password when anyone connects to the Internet from this computer" (unchecked) and "Make this the default Internet connection" (checked). At the bottom are "Back", "Next >", and "Cancel" buttons.

- Click **Next** to continue.

13. On the final screen of the New Connection Wizard, click to check **Add a shortcut to this connection to my desktop** option, and then click **Finish**.



To connect to the Bell Business Internet service:

1. Double-click the Bell Business connection icon on your desktop, and then click the **Dial** button.

Setting up your Optional Business Internet Dial Global Roaming

1. Go to **www.bell.ca/businessaccounts** and access the Downloads page.
2. Download the Global Roaming Dialer.
3. Double-click the Global Roaming Dialer **.exe** file that you downloaded.
4. Double-click the **iPass** folder, then double-click the **iPassConnect** icon.
5. The installation of the Global Roaming software starts. Click **Next** on the first screen.
6. On the next screen, click **Next** to install the Global Roaming software in the recommended location. A progress bar shows the progress of the installation.
7. On the last screen (Figure 1), uncheck the **Launch Global Roaming** box, then click **Finish**.
8. Click **Exit** in the Business Internet installation program.
9. Double-click the **Global Roaming** icon on the desktop.
10. If this is the first time you have used Global Roaming, you will see a license agreement. Read the agreement, then click **Accept** if you agree.

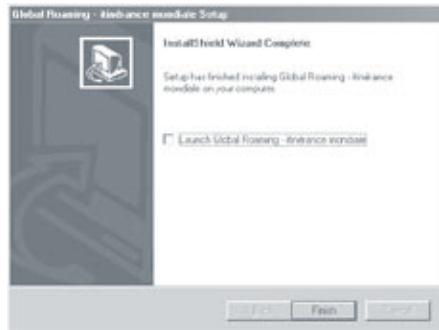


Figure 1: Global Roaming install

11. In the Global Roaming window (Figure 2), click your country in the **Country** pull-down menu.
12. Click your city in the **City** pull-down menu.
13. Click the number you want to dial from the list that appears in the **Phone Book** section of the window.
14. If you need to use dialing prefixes or codes to turn off Call Waiting™ or to access an outside line before dialing, click **Dial Properties** and type them in the Dial Properties window.

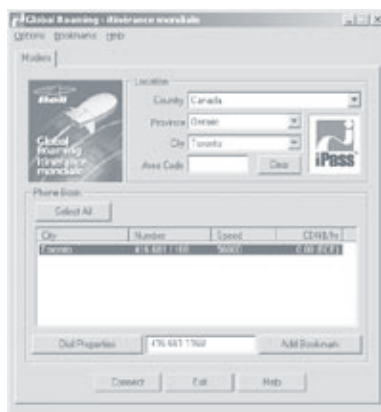


Figure 2: Global Roaming window

15. Click **Connect** to connect to the Business Internet Dial service. A User Info window appears (Figure 3). Type your Business Internet Dial Username and Password in the boxes provided. If your domain is not **bellnet.ca**, ask your account administrator for your domain, and type it in the Domain box. Click **OK**.
16. If you need more help using the Global Roaming software, click the **Help** button in the main window.
17. Double-click the **Internet Explorer** icon on your desktop. Internet Explorer will start and display your Business Internet Dial home page.

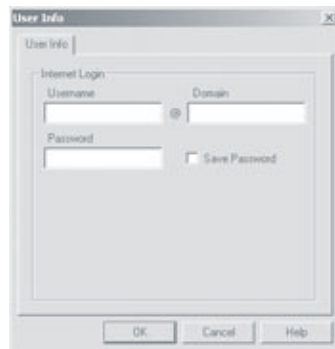


Figure 3: User Info

Disconnecting from the Internet

When you are finished exploring the Internet, follow these steps to disconnect from the Business Internet Dial service and exit your software:

1. Quit the Internet applications you are using.
2. Right-click the small **Global Roaming** or **Dial-Up Networking** icon in the system tray (the lower right-hand corner of the screen).
3. Click **Disconnect**.

Changing the number you dial for Global Roaming

To change the number you dial (for instance, if you move to another city), follow these steps.

1. In the Global Roaming window, click your country in the **Country** pull-down menu.
2. Click your city in the **City** pull-down menu.
3. Click the number you want to dial from the list that appears in the **Phone Book** section of the window.
4. If you need to use dialing prefixes or codes to turn off Call Waiting™ or to access an outside line before dialing, click **Dial Properties** and type them in the Dial Properties window.

For the latest release of Global Roaming dialer, please visit www.bell.ca/globalroaming

For a complete list of all Business dial-up numbers across Canada, visit:
www.bell.ca/businessaccounts.

ONTARIO

Barrie 705 721-1638
 Belleville 613 966-3200
 Brantford 519 750-1638
 Brockville 613 345-4556
 Chatham 519 352-0301
 Clinton 519 482-1638
 Cobourg 905 377-1771
 Cornwall 613 932-0745
 Elliot Lake 705 461-1393
 Guelph 519 767-1638
 Haliburton 705 457-9564
 Hamilton 905 546-1638
 Huntsville 705 788-1638
 Kingston 613 536-1638
 Kitchener-Waterloo 519 743-1638
 Lindsay 705 324-0857
 London 519 438-1638
 Newmarket 905 954-0550
 North Bay 705 474-1638
 Oshawa 905 571-1638
 Ottawa 613 350-1638
 Owen Sound 519 371-1682
 Pembroke 613 735-5252
 Peterborough 705 745-1638
 St. Catharines 905 684-1638
 Sarnia 519 332-6351
 Sault Ste. Marie 705 254-1638
 Sudbury 705 669-1638
 Thunder Bay 807 623-1638
 Toronto and GTA 416 681-1638
 Windsor 519 561-1638

QUÉBEC

Chicoutimi-Jonquière 418 696-1638
 Drummondville 819 472-2232
 Gently 819 298-4895
 Granby 450 777-4400
 Hull 613 350-1638
 Joliette 450 759-4333
 La Malbaie 418 665-2213
 Montréal 514 350-1638
 Québec 418 694-1638
 Rivière du Loup 418 860-3638
 Roberval 418 275-1633
 Saint-Agathe 819 321-2390
 Saint-Hyacinthe 450 773-9830
 Saint-Jérôme 450 432-1638
 Saint-Jovite 819 425-1638
 Sherbrooke 819 829-1638
 Sorel 450 743-6723
 Thetford Mines 418 335-5150
 Trois-Rivières 819 694-1638
 Valleyfield 450 373-2132
 Victoriaville 819 752-4180

Long distance charges may apply. Taxes not included.