

BeH

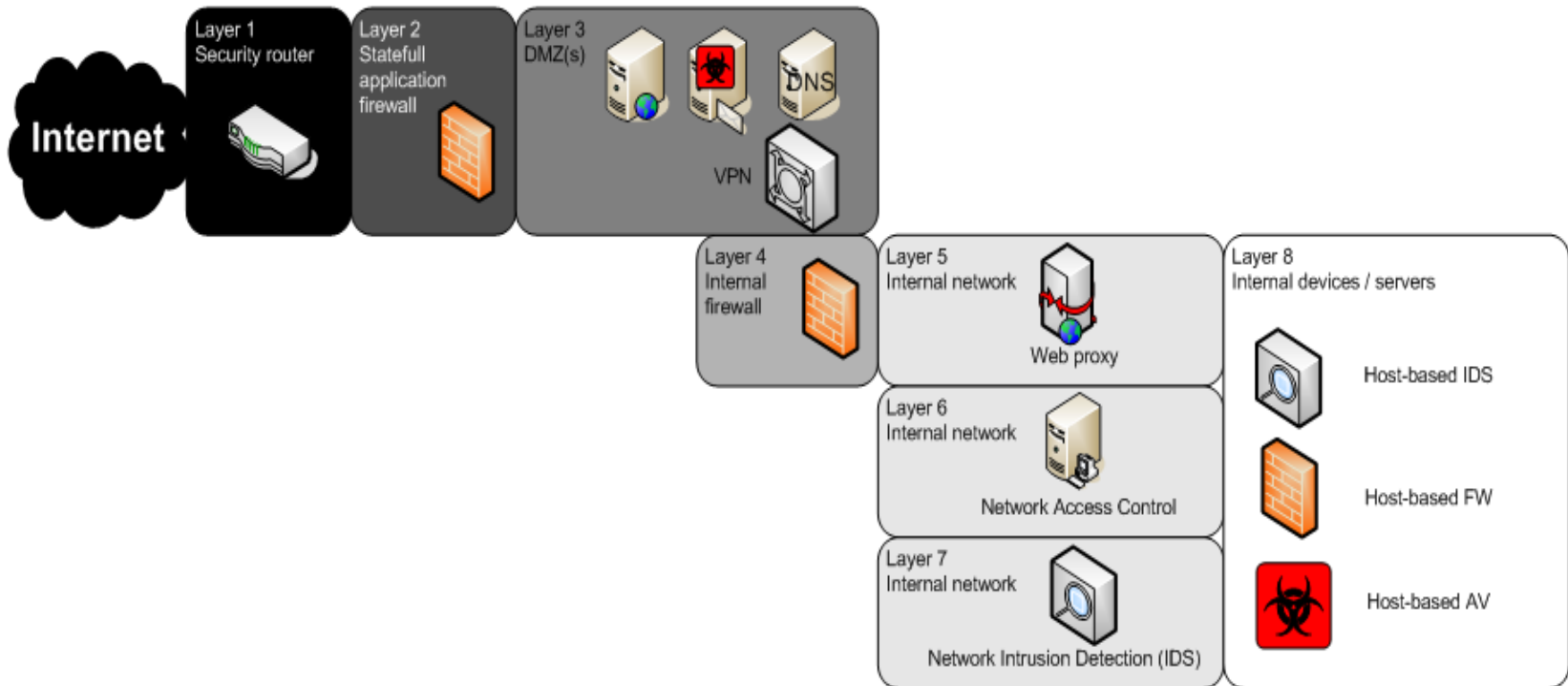


Upstream Security: A proactive layer of security beyond your network perimeter

Tyson Macaulay
Security Liaison Officer
Solutions
5 November 2009

Network security – traditional approach

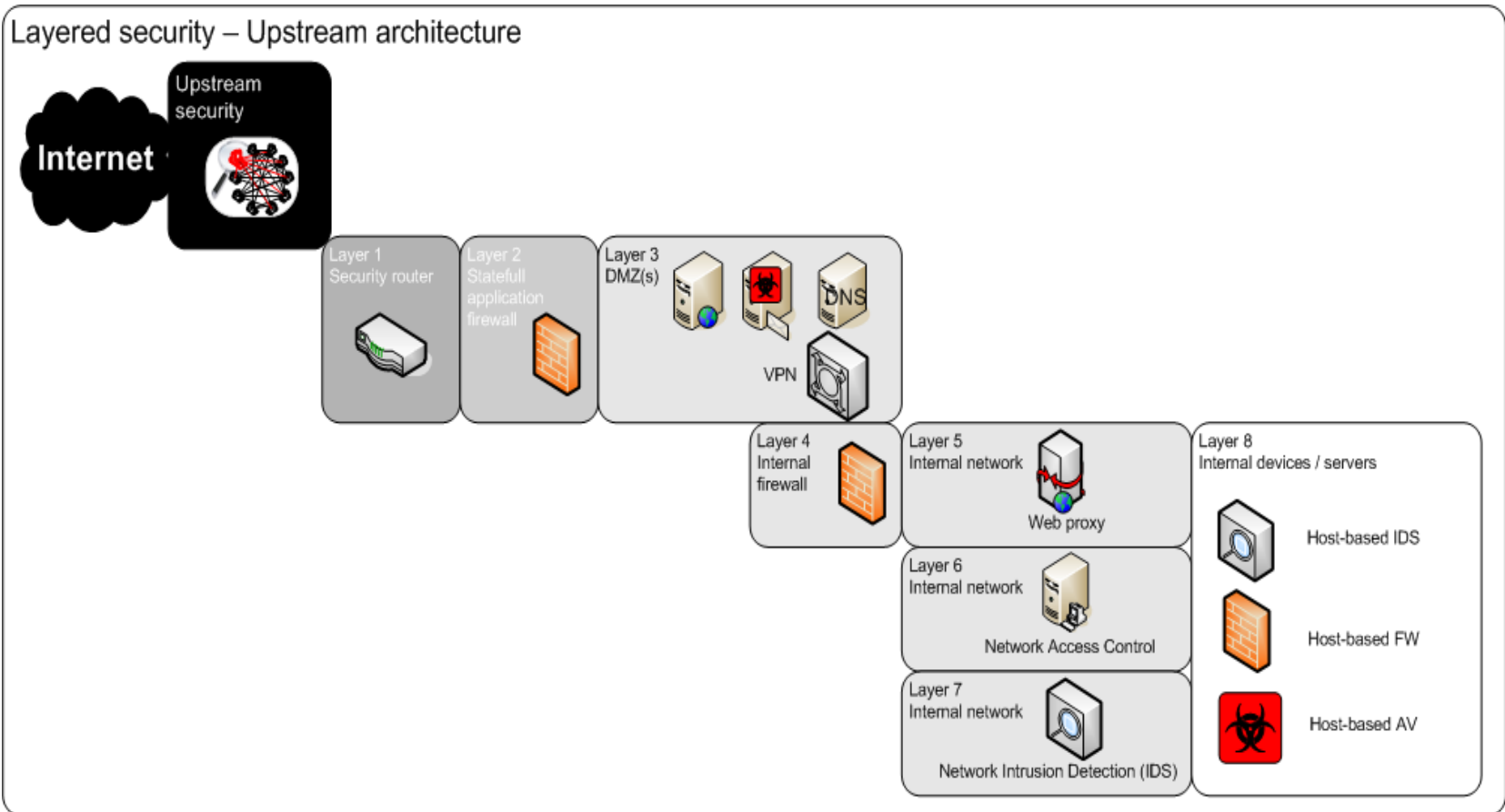
Layered security – enterprise architecture



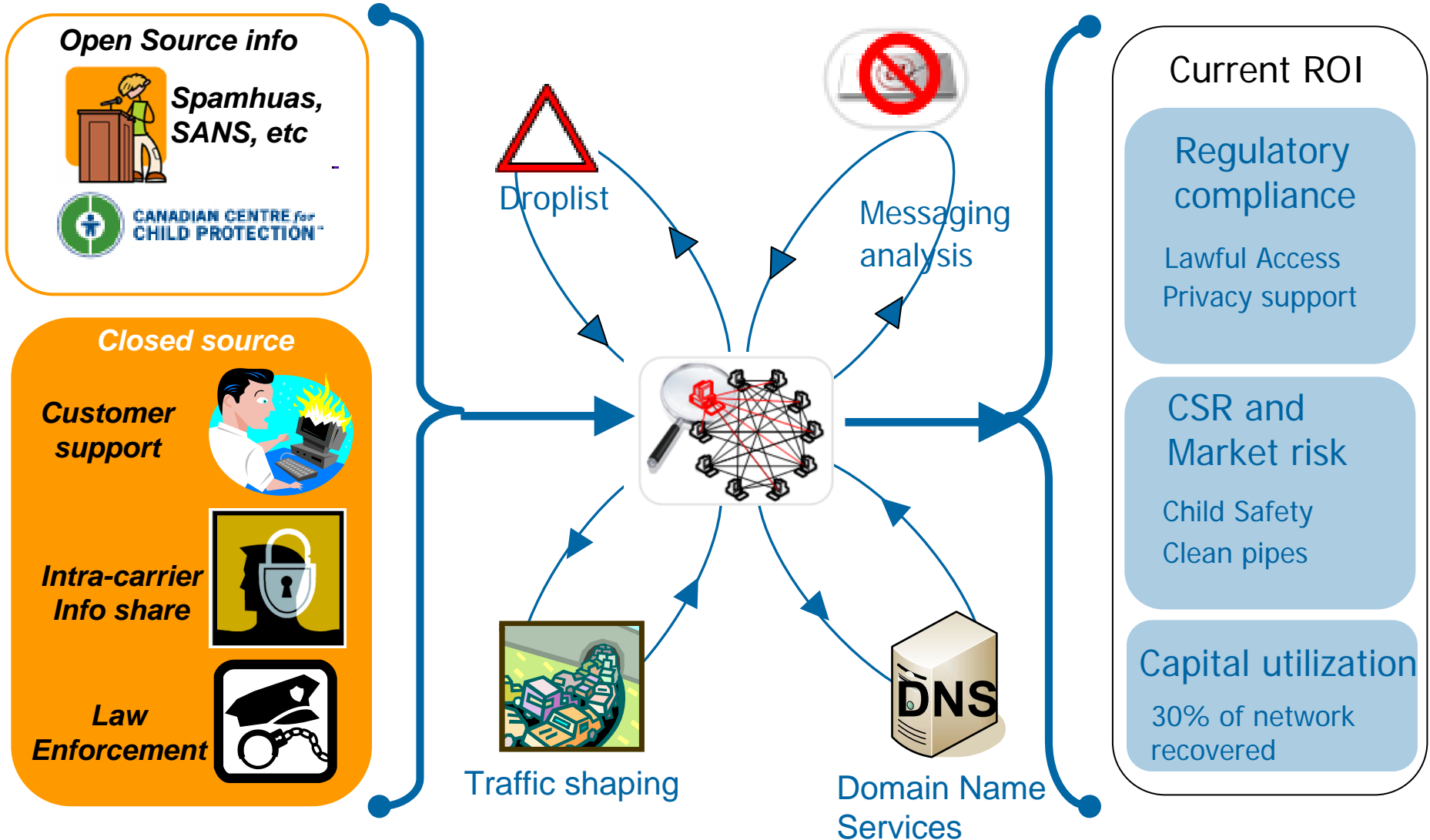
Limitations of traditional network security approach

- Zero-day attacks
- Intrusion Prevention Systems in passive mode
- Black Lists/White Lists
- Evolution of threat agents
- Threats detected when they hit network perimeter (not proactive)

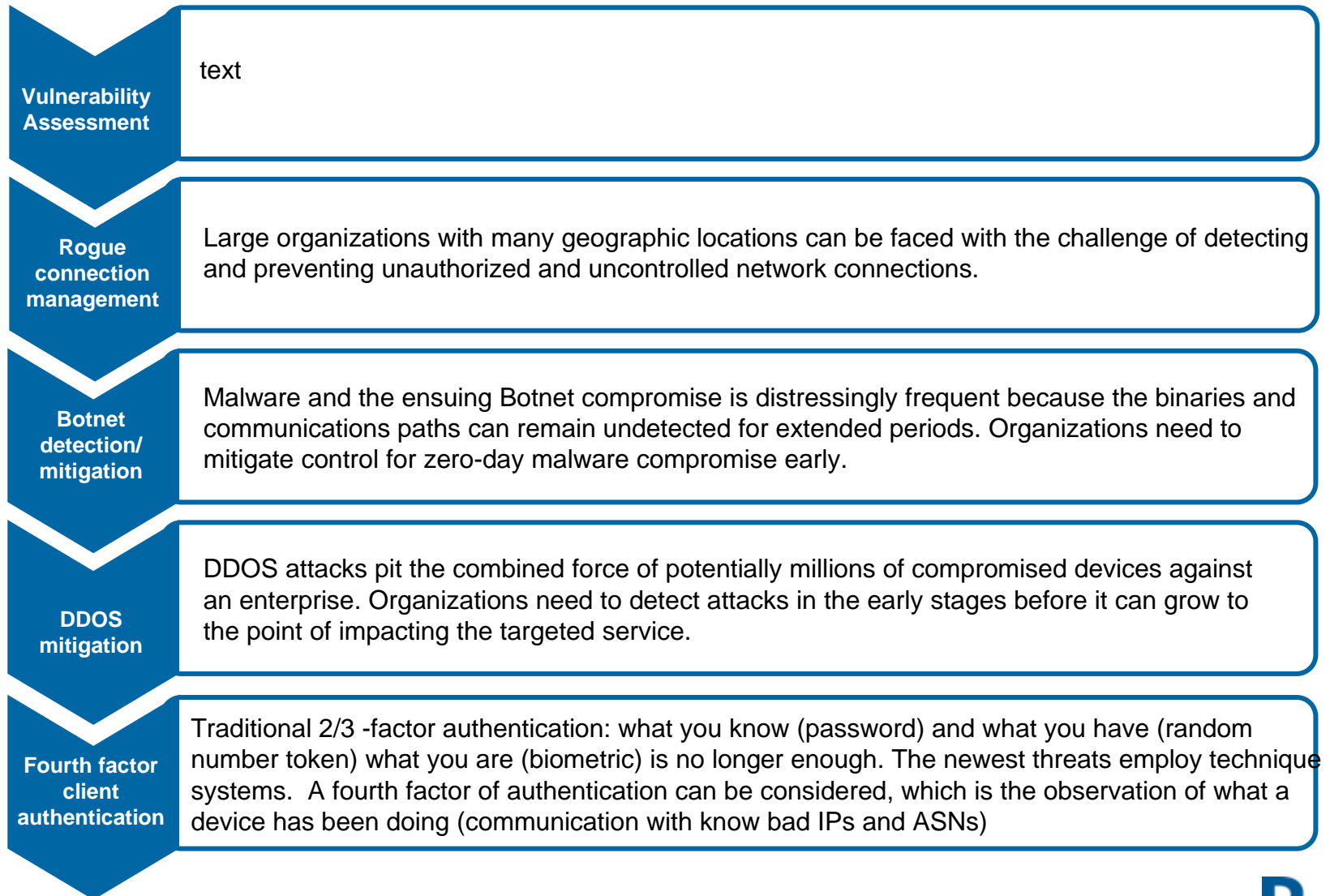
Response: Upstream security as a new layer



Bell Carrier Threat Intelligence@ work

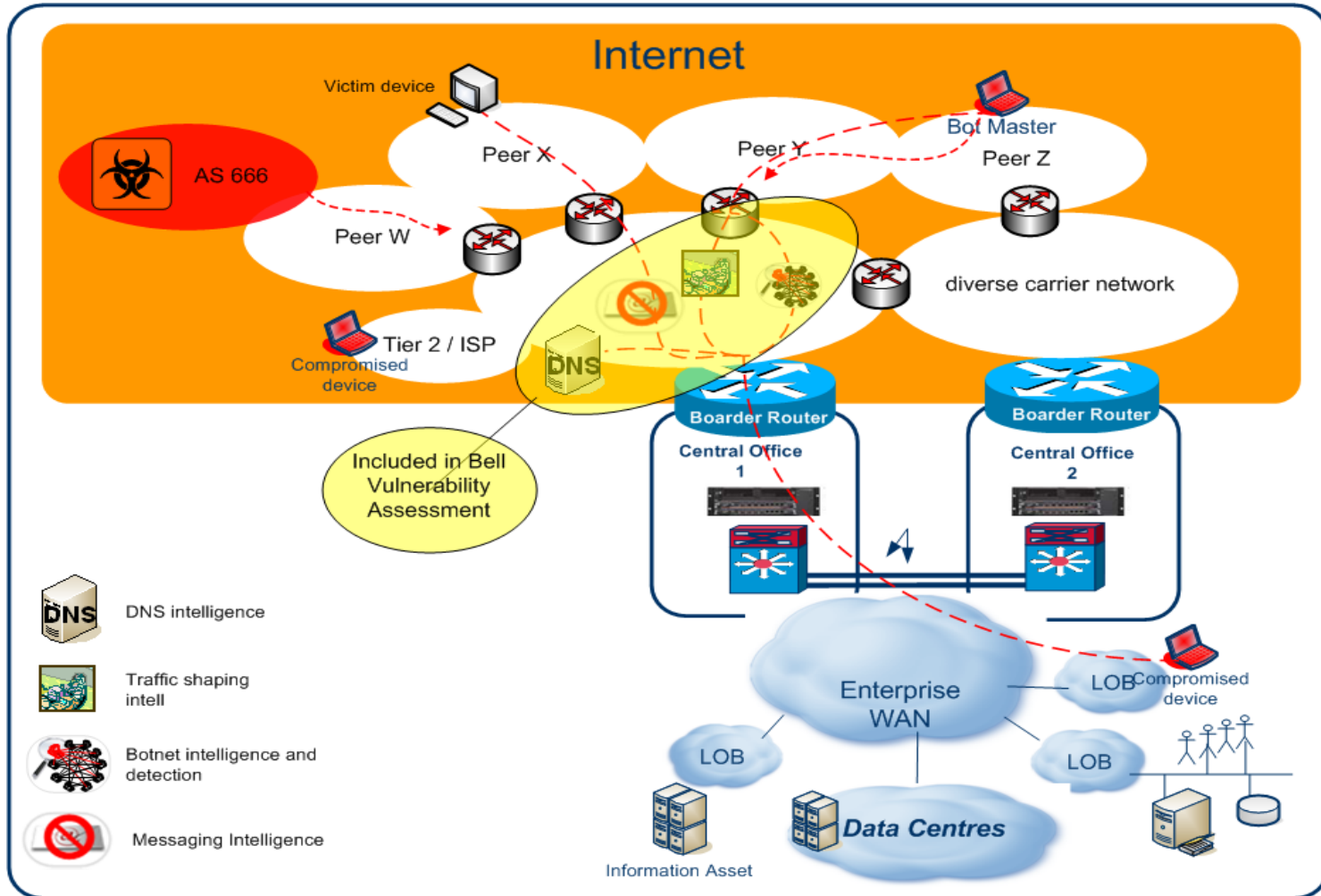


Sample use cases



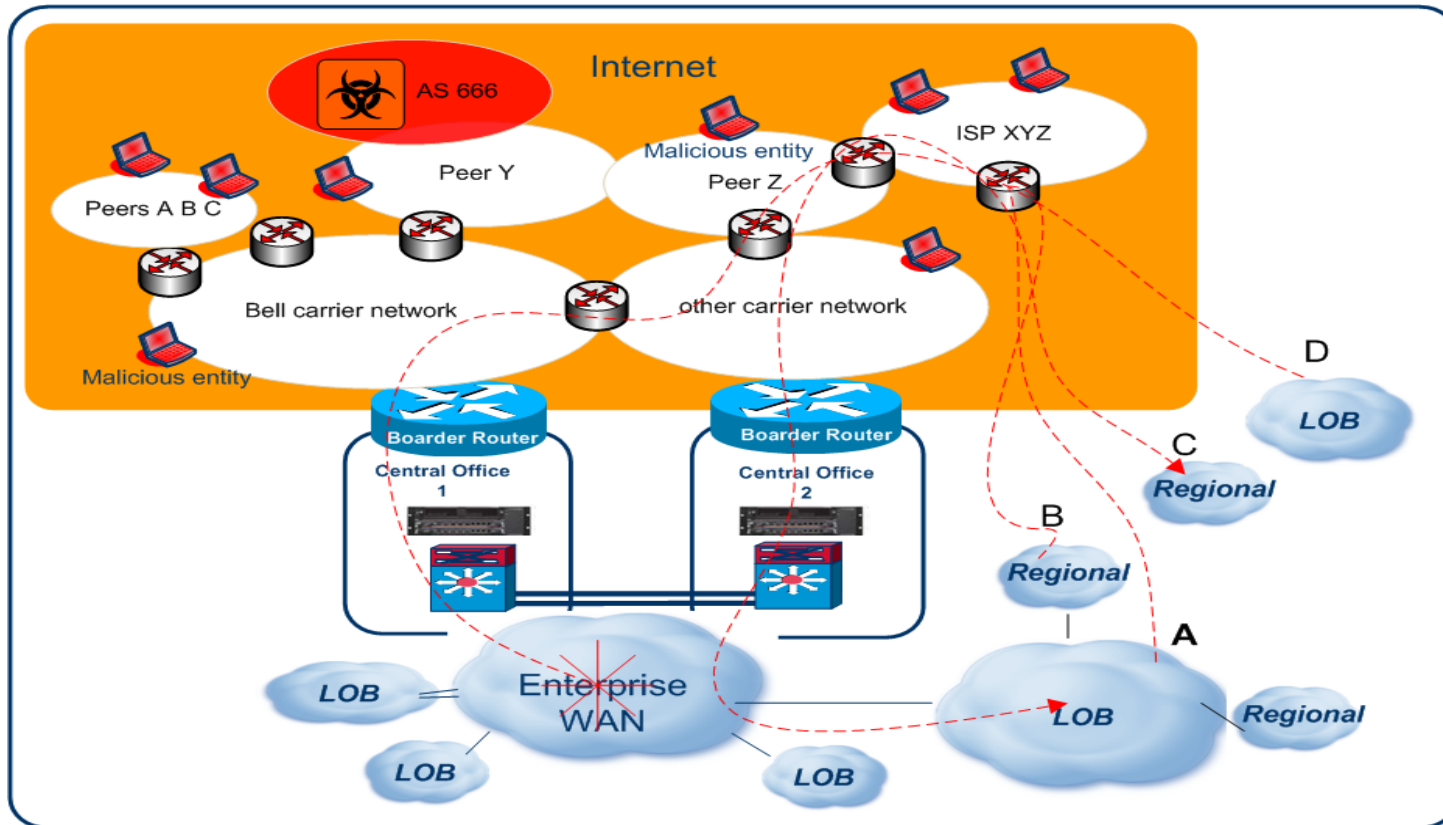
Sample use cases – how it works

Vulnerability Assessment



Sample use cases – how it works

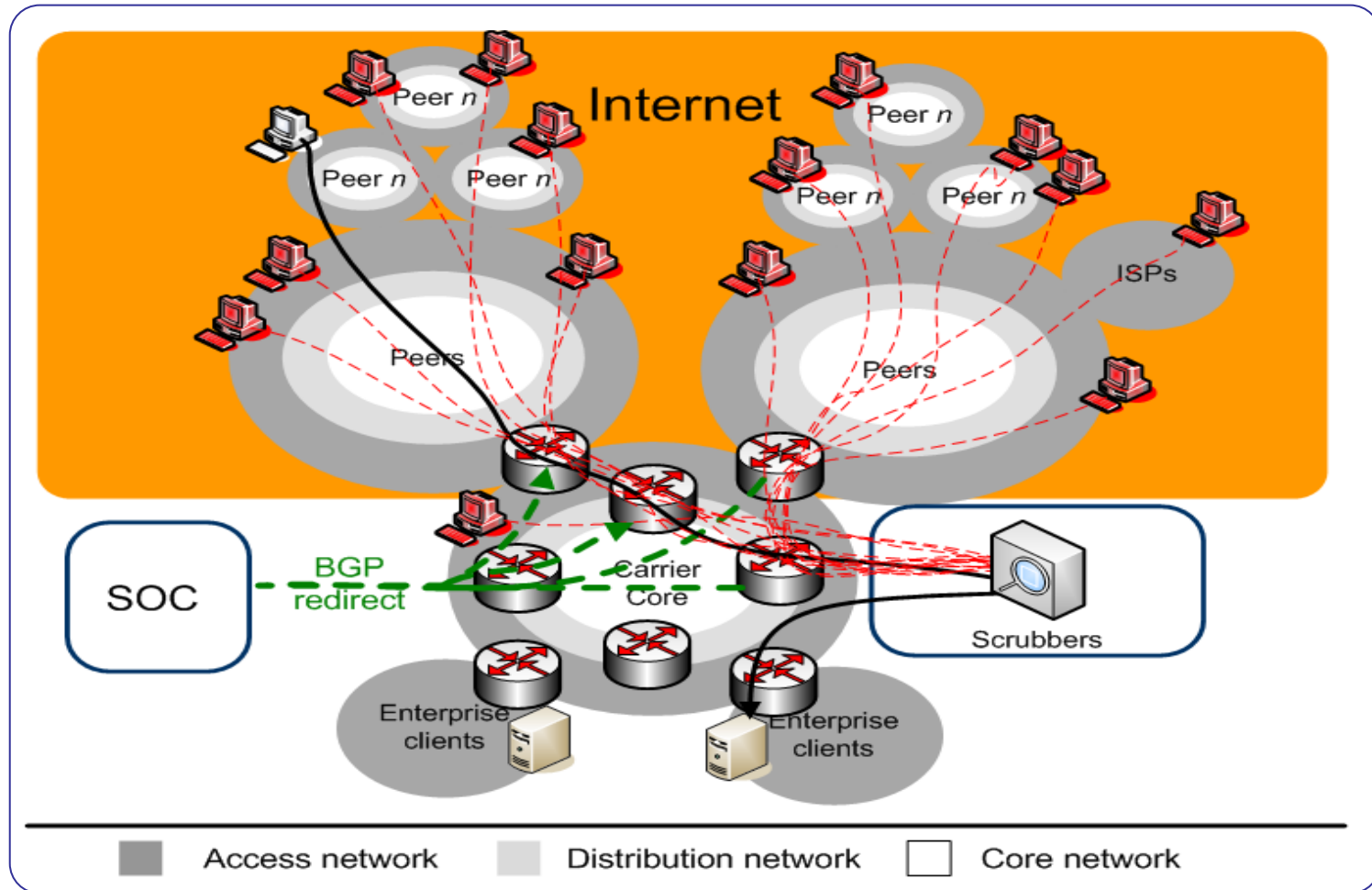
Rogue connection management



- A = Programs and applications at LOB HQ employ rogues for service delivery as a matter of legacy
- B = Connected regions employ rogues for service delivery, speed/redundancy and/or legacy reasons
- C = Regions not on enterprise WAN backbone and utilize rogues for primary HQ interface and service delivery
- D = LOB uses rogues for primary interface to the entire enterprise and for service delivery

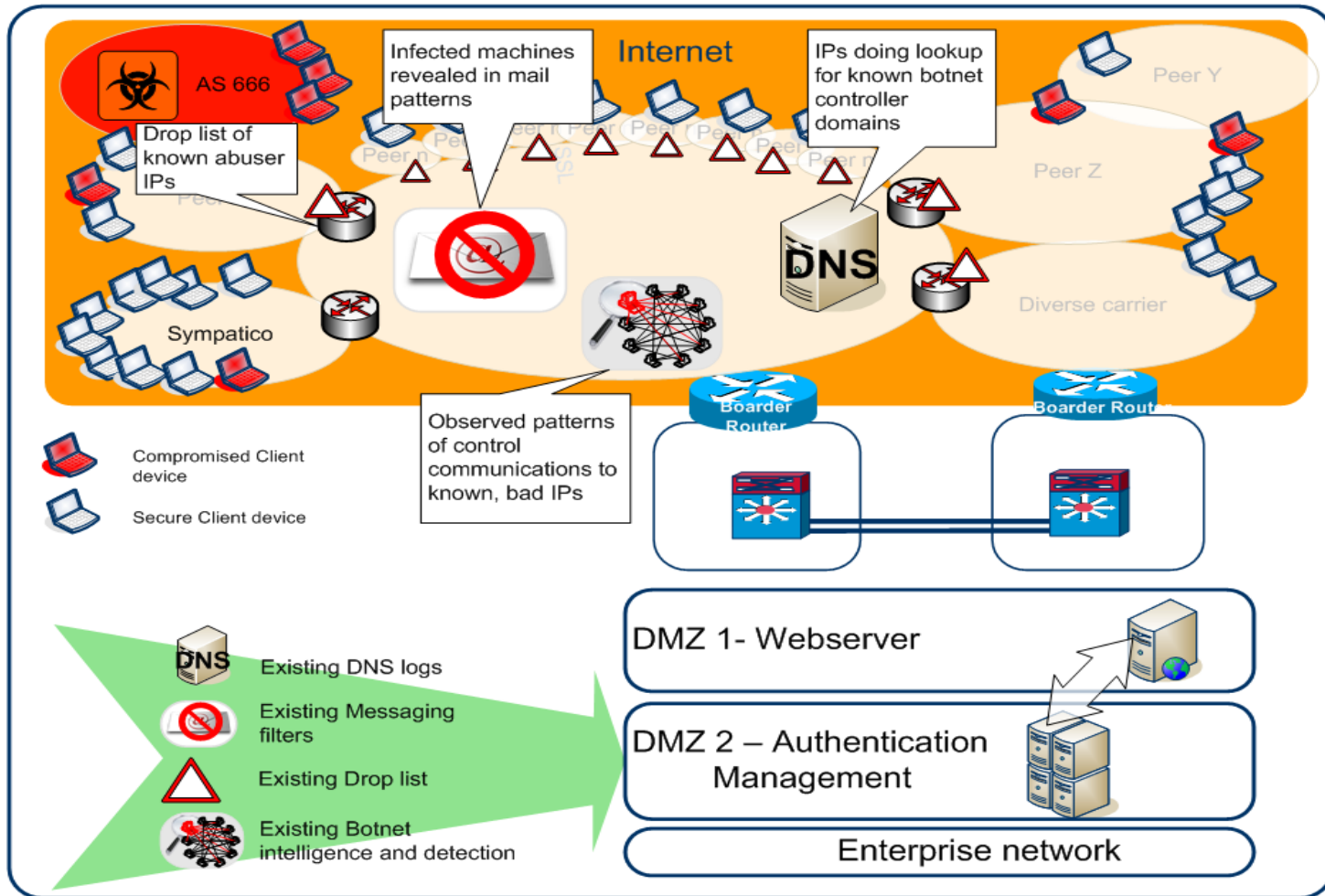
Sample use cases – how it works

DDOS mitigation



Sample use cases – how it works

Fourth factor authentication



Value of Bell's Carrier Threat Intelligence

- Security spending by organizations is increasing due to the evolution and sophistication of new threats increasing the complexity and cost of mitigating solutions
- Bell's Carrier Threat Intelligence is a proactive and response service which may lower costs associated with administration, resourcing and bandwidth consumption
- Within the Carrier Threat intelligence - Zero-day attacks, illicit activities, penetration attempts and compromises which are undetectable by perimeter security products reveal themselves through communications patterns

What next?

Experience this new proactive layer for yourself

- Speak to your sales representative
- Read the whitepaper for additional information
- Engage Bell to pilot this service within your organization